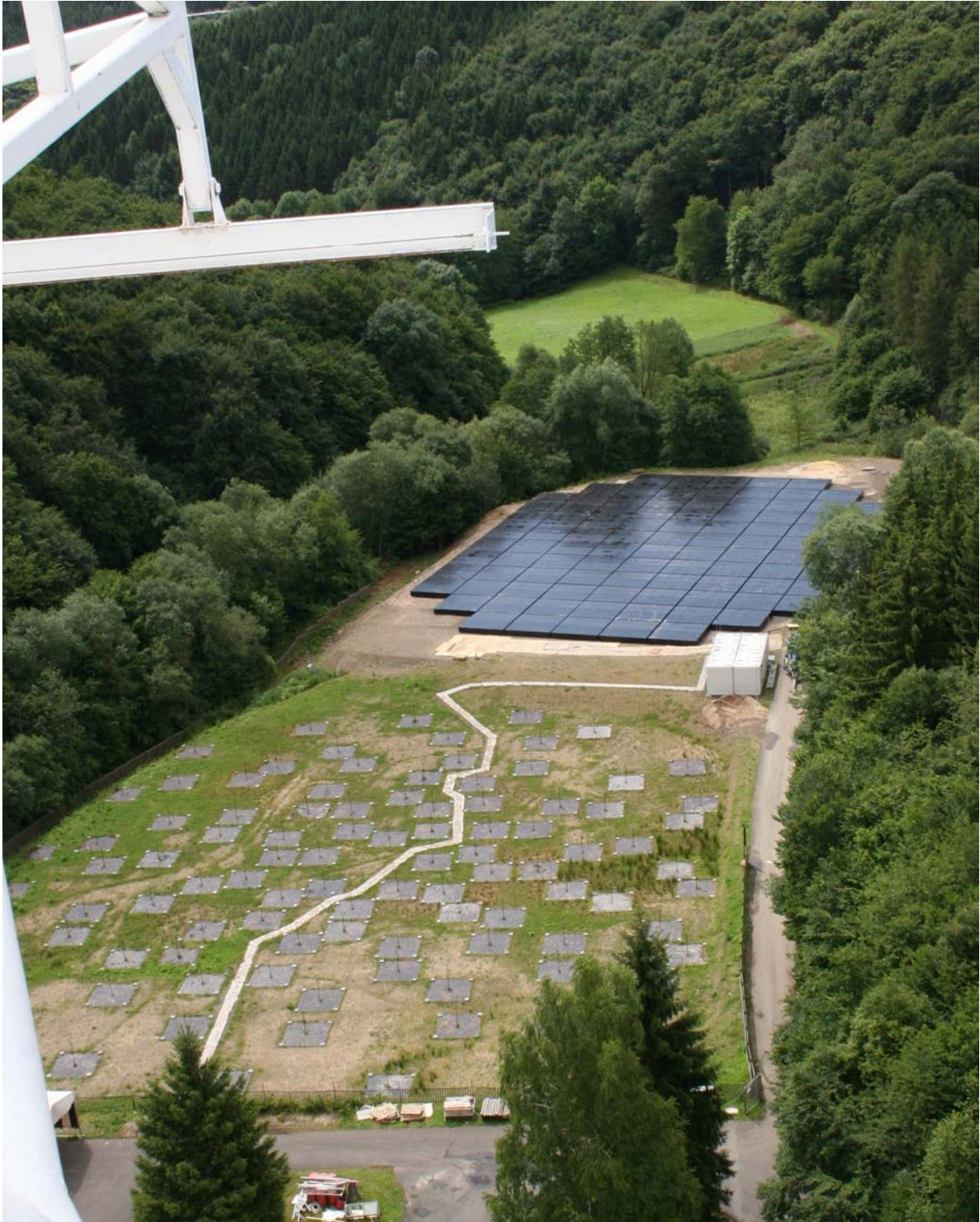


The Effelsberg LOFAR highband station is ready!



LOFAR low-band (bottom) and high-band (top) stations next to the Effelsberg 100m radio telescope, from which this photograph was taken. Both stations consist of 96 dipoles resp. tiles. The high-band station with a diameter of 60 m was installed in July 2009 and is the first one of this size. Credit: James Anderson, MPIfR Bonn.